



WILDWOOD

February 25, 2020

MEMORANDUM

To: Planning and Parks Committee Members

From: Department of Planning and Parks

Re: **Revised Landscaping Plan for John L. LeCave Memorial Trailhead (Ward One)**

Cc: The Honorable James R. Bowlin, Mayor
Administration and Public Works Committee Members
Economic Development Committee Members
Sam Anselm, City Administrator
John A. Young, City Attorney
Rick Brown, P.E. and P.T.O.E., Director of Public Works
Kathy Arnett, Assistant Director of Planning and Parks

Background >>>

As was noted at the Planning and Parks Committee's January 2020 meeting, one (1) of the remaining items the Department of Planning and Parks is hoping to complete in early 2020 is the landscaping design for the John L. LeCave Memorial Trailhead. A landscape plan was developed, as part of the original package of information, but was not included in the bid specifications to ensure the project would not be over budget, given the City's desire to finally proceed with this facility, after many years of delays associated with it. With the favorable bidding environment at that time, and the winning bid, in this instance, being much less than the designer's estimate, money remained in the line item and the Department began the process of obtaining the necessary approvals of the Landscape Plan and then the authorization to expend funds for the installation of the trees, shrubs, and other plantings.

The landscaping plan was presented to the Planning and Parks Committee in January 2020 and it approved the general design of it, given the types and locations of the selected plantings had to be cognizant of the levee structure and a large area of under-seepage easement in place on the one (1) acre lot, where the trailhead has been constructed. The recommended plan had been developed by a landscape architect and, with the Committee's endorsement, was presented to the City Council for its consideration and passage of a Resolution authorizing the selected bidder to proceed with the work, when weather permitted such.

The day of the City Council meeting its was discovered by a member of City Council (Ms. Edens) that a number of the plantings had been identified as invasive types, which, if installed, would be contrary to the *Sustainable Plantings Guide* of the City, as well as direction in this regard from the City's Tree Advisory Board (the Planning and Zoning Commission). Accordingly, the Department of Planning and Parks requested no action be taken on the Resolution to allow it time to have the plan revised to address the unwanted plantings and replace such with an appropriate alternative. The City Council concurred with the delay and authorized the postponement.

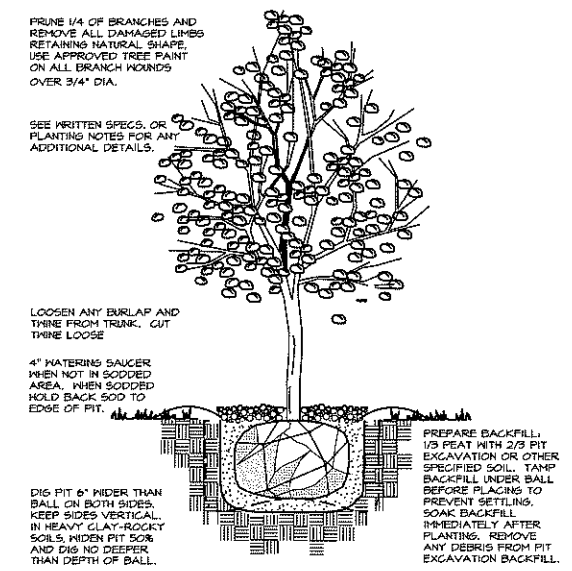
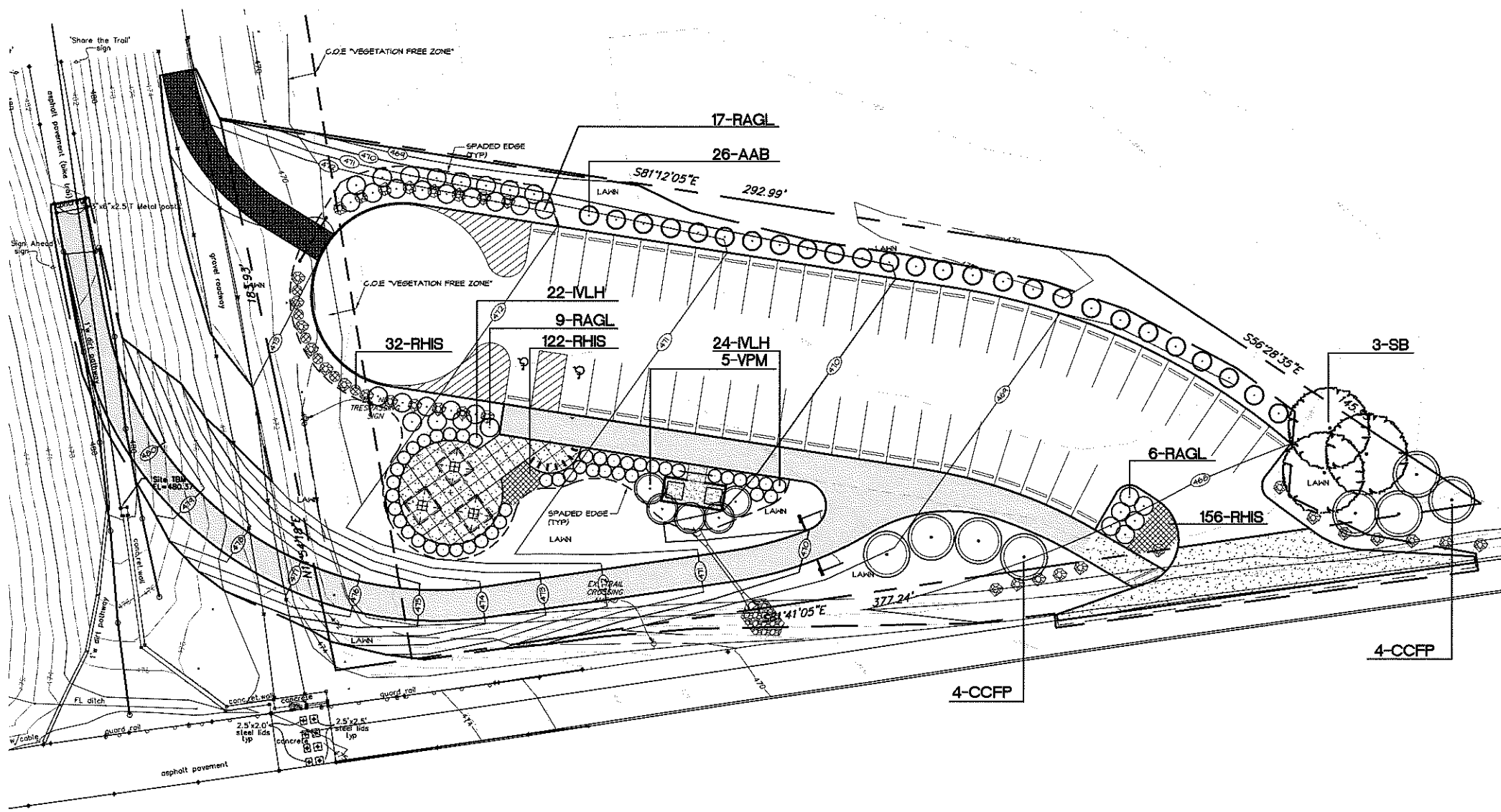
[Content of Tonight's Presentation >>>](#)

The landscape architect has completed the revisions to the plan. The revisions were to address the invasive types that had been shown, while also, at the direction of another City Council Member (Mr. Brost), asked the son of Mr. LeCave to provide any input on the planting scheme for this memorial to his father. Mr. LeCave did offer that his father liked Weeping Willows and Black-Eyed Susan plantings. This information was then provided to the Landscape Architect for use in updating and revising the plan to meet the direction that had been set forth for this area.

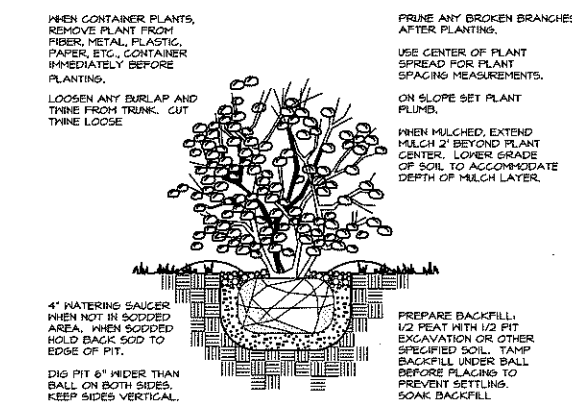
The plan has now been revised and the major improvements to it include the following items: (1.) the invasive Burning Bushes have been replaced with Chokeberries, while Weeping Willow Trees and Black-Eyed Susan plantings are included to reflect the LeCave Family's wishes in this regard. The revised Landscape Plan is attached for the Committee Members' review and comment. Two (2) items do remain before the plan and Resolution can be returned to the City Council for action, which includes the approval of the revised planting pattern by the U.S. Army Corps of Engineers and the Chesterfield-Monarch Levee District, given the levee structure and associated easements and also the selected bidder needs to review and update the pricing that are associated with these changes. However, before proceeding forward with these last two (2) steps, the Department of Planning and Parks wanted to provide the plan to the Committee Members and seek input and comments upon it. If the plan is acceptable, as revised, the next steps will be completed as quickly as possible, hoping to still be able to install the plantings in this area in early Spring.

[Summary and Conclusion >>>](#)

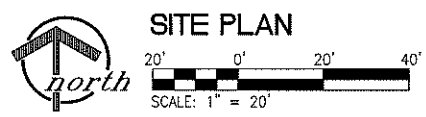
If any of the Committee Members should have any questions or comments regarding this information, please feel free to contact the Department of Planning and Parks at (636) 458-0440. A presentation is planned on this matter at tonight's meeting. Thank you for the opportunity to present this information to the Committee on this important matter.



DECIDUOUS TREE PLANTING
NOT TO SCALE



SHRUB PLANTING
NOT TO SCALE



LEGEND

| | |
|--------|-----------------------------------|
| □ | AREA INLET/CURB INLET |
| ○ | MANHOLE |
| ▷ | FLARED END SECTION (FES) |
| ○ | CLEAN OUT |
| ⊕ | LIGHT STANDARD |
| ⊙ | BOLLARD LIGHT |
| ⊖ | GUY WIRE |
| UP | UTILITY POLE |
| GV | GAS VALVE |
| WV | WATER VALVE |
| WM | WATER METER |
| ⊙ | BENCHMARK |
| ⊖ | SIGN |
| MB | MAILBOX |
| ♿ | HANDICAP |
| YF | YARD FAUCET |
| FP | FLAGPOLE |
| —W— | WATER LINE |
| —G— | GAS LINE |
| —OE— | OVERHEAD ELECTRIC |
| —OT— | OVERHEAD TELEPHONE |
| —OETG— | OVERHEAD ELECTRIC TELEPHONE CABLE |

PLANT SCHEDULE (FROM SUSTAINABLE PLANTING GUIDE)

| KEY | QUANTITY | BOTANICAL NAME | COMMON NAME | SIZE & PLANTING METHOD | REMARKS |
|---|----------|--|---------------------------|------------------------|----------------|
| SHADE TREES | | | | | |
| SB | 2 | <i>Salix babylonica</i> | weeping willow | 2 1/2" GAL B & B | SINGLE TRUNK |
| ORNAMENTAL TREES | | | | | |
| CCFP | 8 | <i>Cercis canadensis</i> "Forest Pansy" | FOREST PANSY REDBUD | 2 1/2" GAL B & B | SINGLE TRUNK |
| DECIDUOUS SHRUBS | | | | | |
| AAB | 26 | <i>Aronia arbutifolia</i> "Brilliantissima" | RED CHOKEBERRY | 5 GAL. | CONT. |
| MLH | 46 | <i>Itea virginica</i> "Sprich" | LITTLE HENRY SHEETSPIRE | 5 GAL. | CONT. |
| RAGL | 32 | <i>Rhus aromatica</i> "Loro-Low" | SMALL FRAGRANT SUMAC | 5 GAL. | 12" HT. |
| VPM | 5 | <i>Viburnum plicatum</i> "Marlesii" | MARSH DOUBLEFILE VIBURNUM | 4-5" HT. | B & B |
| GROUND COVER/ANNUALS/ PERENNIALS/GRASSES | | | | | |
| RHS | 310 | <i>Rudbeckia hirta</i> "Indian Summer" | BLACK-EYED SUSAN | 1 QT. | CONT. 12" o.c. |

GENERAL NOTES

- REPORT ANY DISCREPANCIES FOUND WITH REGARD TO EXISTING AND/OR PROPOSED CONDITIONS IMMEDIATELY TO THE CITY'S REPRESENTATIVE.
- DO NOT PROCEED WITH CONSTRUCTION ACTIVITIES WHERE KNOWN DISCREPANCIES EXIST. CONTRACTOR SHALL ASSUME FULL RESPONSIBILITY FOR NECESSARY REVISIONS RESULTING FROM FAILURE TO PROVIDE PROPER NOTIFICATION.
- CONTRACTOR SHALL BE RESPONSIBLE FOR ANY COORDINATION WITH OTHER RELATED CONSTRUCTION ACTIVITIES NECESSARY TO ACCOMPLISH SPECIFIED WORK.
- SEE PLANTING DETAILS AND NOTES FOR ADDITIONAL INFORMATION.
- ALL SHRUB BEDS SHALL RECEIVE 3"-4" SHREDDED HARDWOOD BARK MULCH. APPLY GRANULAR PRE-EMERGENT HERBICIDE THROUGHOUT PLANT BED. APPLY PER MANUFACTURER'S RECOMMENDED RATE.
- CONTRACTOR SHALL BE RESPONSIBLE FOR OBTAINING ANY AND ALL NECESSARY CONSTRUCTION PERMITS FROM APPROPRIATE AGENCIES PRIOR TO BEGINNING WORK.
- IN THE EVENT THAT PLAN GRAPHICS AND PLANT SCHEDULE CONFLICT, PLAN GRAPHICS SHALL TAKE PRECEDENCE. CONTRACTOR IS RESPONSIBLE FOR VERIFYING ALL QUANTITIES.
- ALL LAWN AREAS AND LANDSCAPE AREAS DISTURBED BY CONSTRUCTION SHALL BE FINE GRADED, SEEDING AND MULCHED PER SPECS.

NOTE: UNDERGROUND FACILITIES, STRUCTURES, AND UTILITIES HAVE BEEN PLOTTED FROM BEST AVAILABLE RECORDS. THEREFORE THE RELATIONSHIP BETWEEN PROPOSED WORK AND EXISTING FACILITIES, STRUCTURES, AND UTILITIES MUST BE CONSIDERED APPROXIMATE, AND IT IS THE CONTRACTOR'S RESPONSIBILITY TO DETERMINE THEIR EXACT LOCATION AND THE EXISTENCE OF ANY NOT SHOWN.

LAND PLANNING
RECREATION PLANNING AND DESIGN
LANDSCAPE ARCHITECTURE
1426 GRAVVOIS ROAD SUITE 102
ST. LOUIS, MO 63128
(314)984-1211



John L. LeCave
Memorial Trailhead
Centaur Road
Wildwood, Missouri

OWNER
City of Wildwood
18860 Main Street
Wildwood, MO 63040
Ph: 636-458-0440
Fax: 636-458-6969
www.cityofwildwood.com

SHEET TITLE
Landscape Plan

JOB NUMBER
16007

DATE DRAWN BY
09/04/18 KJK

REVISION
02/19/20 REV. PLANTING
08/12/19 REV. PLANTING
09/05/19 REV. PLANTING
09/06/19 REV. PLANTING

SHEET NUMBER
L1