



MEMORANDUM

To: Board of Public Safety

From: Rick Brown, Director of Public Works / City Engineer

Date: September 7, 2021

Re: Lafayette High School - Student Pickup in Dartmouth Subdivision

With the recent start of fall classes, changes were made to student bus routes by the Rockwood School District. Due to a lack of bus drivers, the District reduced the number of bus routes providing service to schools. To achieve this goal, bus service is no longer provided to homes for students who live within approximately one mile. As a result, more students are walking to school, however, there is also an increased demand for student drop-off and pick-up. This demand is expected to increase with poor or inclement weather.

Due to the bus route changes, residents of Dartmouth subdivision, immediately north of Lafayette High School, have been impacted (see **Exhibit 1** for the subdivision location). With the start of school, Lafayette High School, in particular, has been challenged to handle the increased demand for student pick-up during the afternoon dismissal period. At times, we have seen vehicles queuing onto Clayton Road and even Route 109, as pick-up vehicles are slow to be served onsite. As a result, officers with the Wildwood Precinct, including Captain Mundel, have contacted Lafayette High School administrative staff and have provided suggestions to better manage the dismissal period. While we have already seen improvements, we are optimistic that, based on recent input from the Wildwood Precinct, Lafayette will demonstrate even further improvement in the coming days.

Unfortunately, when onsite student pick-up is inefficient, it encourages some parents to ignore school procedures, and arrange for their student to meet them across the street in the Dartmouth Subdivision. Dartmouth Subdivision, due to its proximity to Lafayette High School, has struggled with student parking previously. As a result, there is a 3-hour maximum parking restriction in place to eliminate potential all-day, on-street, student parking. While on-street student parking is still a concern, Dartmouth residents, in particular those residing closest to Lafayette, are now requesting additional restrictions to eliminate on-street, short duration stopping or standing during the afternoon dismissal period, for student pick-up.

Recommendation

From the perspective of the Department, it is felt that additional time would be beneficial to allow internal parking flow procedures to improve. With the long Labor Day weekend, we've not had sufficient time for the District to implement on-site changes, as recommended by the Wildwood Precinct, that are expected to reduce the demand for student pick-up in Dartmouth. However, if this approach is not satisfactory, or the District is unable to make further improvements, the Department would recommend consideration of additional signage restricting standing or stopping, from 8AM-9AM and from 2:30-3:30 PM (see **Exhibit 3**), with an exception made for commercial vehicles. It should be noted that this change will require the installation of new signs, in addition to the existing no parking signs. Furthermore, the installation of a "No

U-Turn” sign could be considered to address vehicles tuning onto Dartmouth Crossing Drive or Dartmouth Crest Drive from Clayton Road (see **Exhibit 4**).

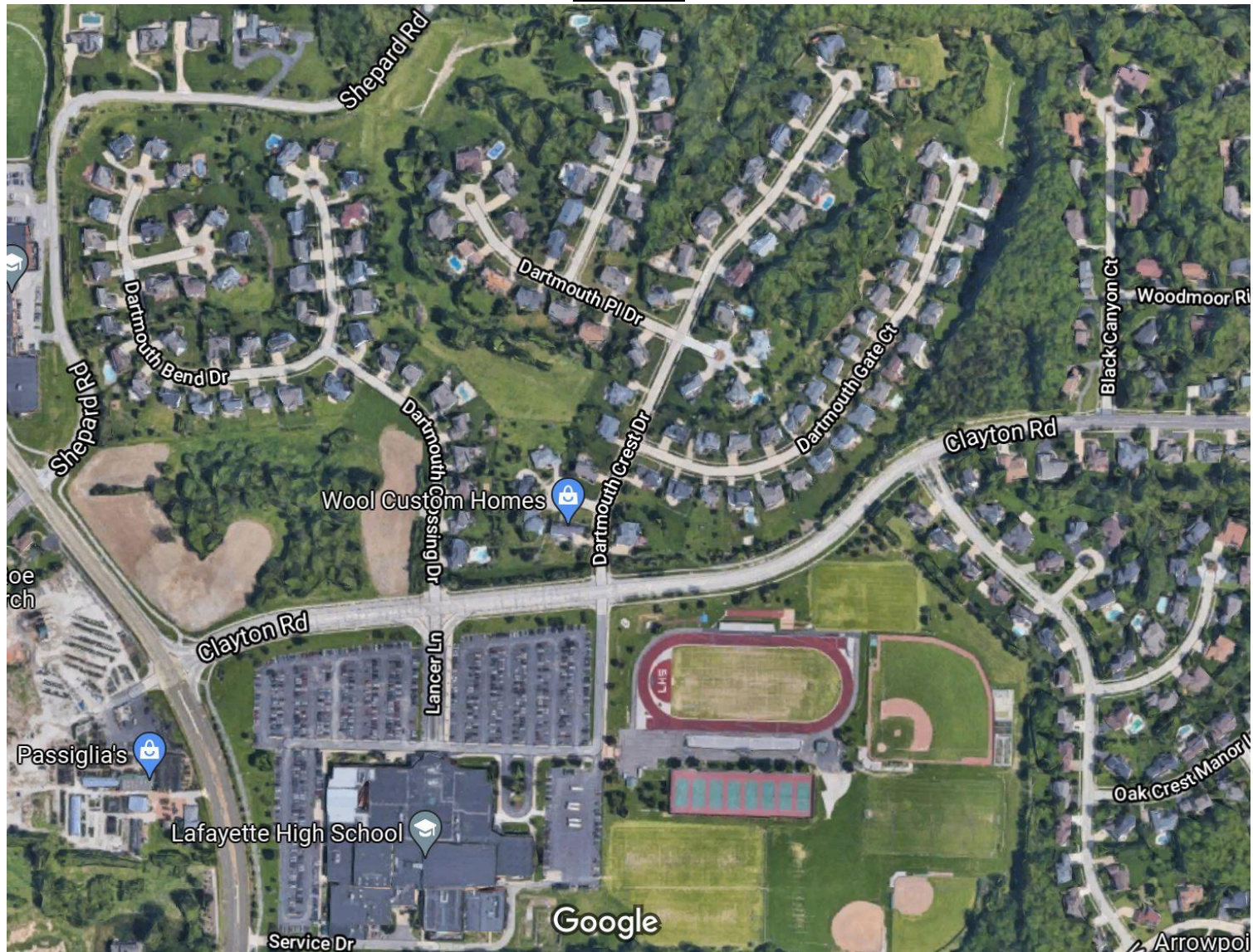
Captain Mundel and I will be available for questions or comments on this matter at the September 9th, 2021, Board of Public Safety meeting.

RCB



WILDWOOD

Exhibit 1





WILDWOOD



Exhibit 2: Parking and U-Turn Restrictions near Marquette High School



Exhibit 3: No Standing or Stopping Sign



Exhibit 4: No U-Turn Sign