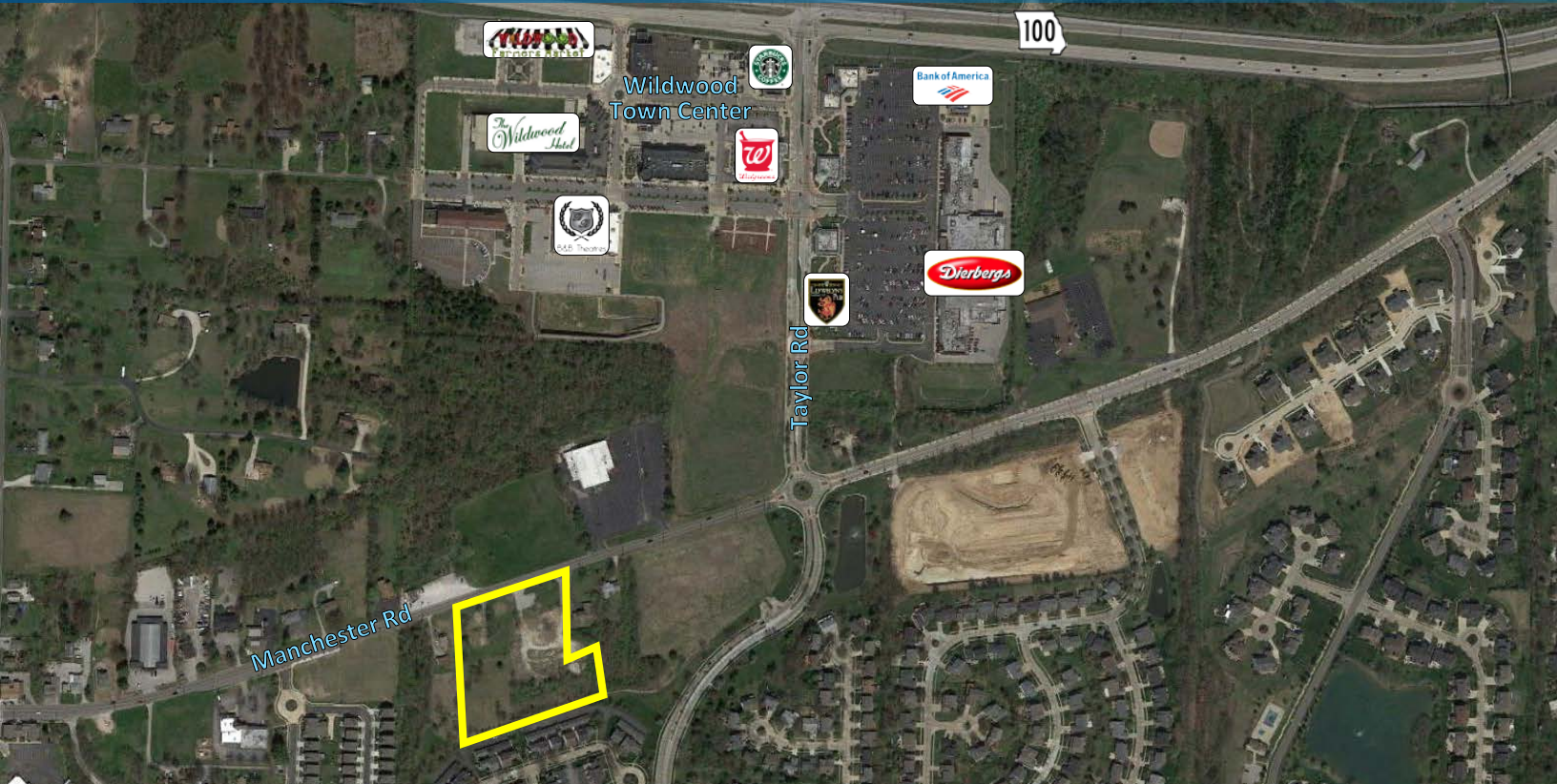


FOR SALE > LAND

16830-16840 Manchester Road

WILDWOOD, MO 63040



Property Features

- > 4.212 AC
- > Zoned W, Workplace District
- > St. Louis County locator numbers:
 - 24V 52 0202
 - 24V 63 0352
 - 24V 63 0011
 - 24V 61 0068
- > Located near St. Louis Community College & Wildwood Town Center
- > **SALE PRICE:** \$795,000 (\$4.33/SF)

Demographics

	1 MILE	3 MILE	5 MILE
POPULATION	9,143	33,542	81,702
AVG HH INCOME	\$118,891	\$132,921	\$131,987

Contact Us

DENNIS DESANTIS, SIOR, CRE
DIR +1 314 584 6253
MOB +1 314 504 5353
Dennis.DeSantis@colliers.com

COLLIERS | ST. LOUIS
101 South Hanley Road, Suite 1400
St. Louis, MO 63105
www.colliers.com

