

## DEER STRIKE ANALYSIS

One of the top four contributing factors for crashes in the City of Wildwood in 2018 was animals in the roadway. Most of the crashes involving animals in the roadway are related to deer. While some deer strikes are reported to police, many go unreported resulting in less accurate statistics. To best account for deer related crashes, statistics are gathered from crash reports, computer aided dispatch records and euthanasia totals. In 2018, 50 deer were euthanized by police officers of the Wildwood Precinct<sup>2</sup>, compared to 40 deer in 2017. However, the total number of deer strikes in 2018 was 231, which was lower than the number in 2017 (252). Table 31 shows the breakdown of the deer related incidents in Wildwood compared to 2014-2017. When looking at the months in which deer strikes were most frequent, it appears that more deer strikes occur in the Winter months (see Figure 21). As shown in Figure 21, this has remained constant for the last three years, though deer strikes were higher in both 2016 and 2017 compared to 2018. Most notably, in 2016 and 2017 there was a large spike in October, but this trend was not seen in 2018. Figure 22 shows the street segments with the highest concentration of deer strikes in 2017. Figure 23 compares the locations of the deer strikes caused by crashes and the strikes in which police officers found deer on the side of the road.

---

<sup>2</sup> The dataset to analyze deer strikes is different from the dataset for all crashes occurring in the City of Wildwood. Deer strike data is based on calls for service, not crash reports; therefore, the number of deer strikes may differ from the number of crash reports with animals as a probable contributing factor.

TABLE 31

Deer Related Incidents by Year					
	2014	2015	2016	2017	2018
Deer Euthanized	37	55	45	40	50
Hunting Related Incidents	0	0	0	2	0
Deer Struck- No Crash Report	187	187	156	193	178
Deer Struck- Crash Report	44	48	58	59	53
<b>Total Deer Struck</b>	<b>231</b>	<b>235</b>	<b>214</b>	<b>252</b>	<b>231</b>

FIGURE 21

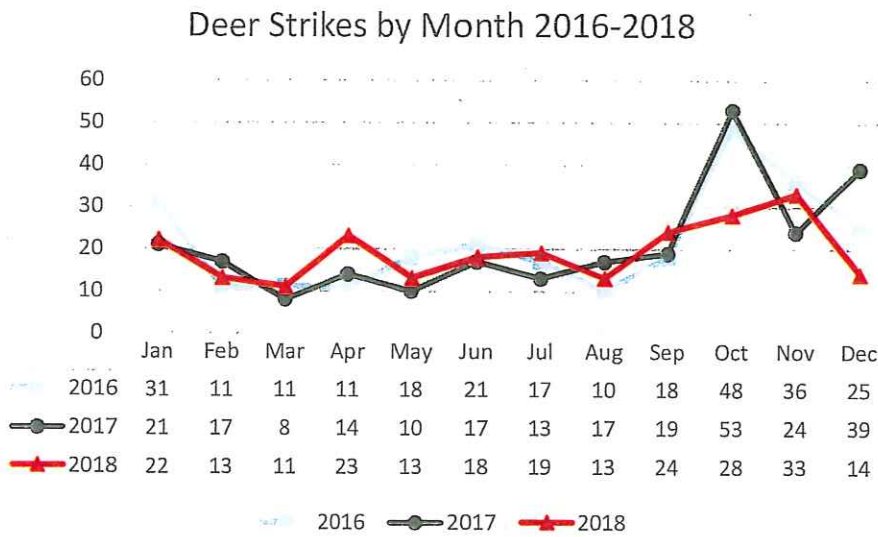


FIGURE 22

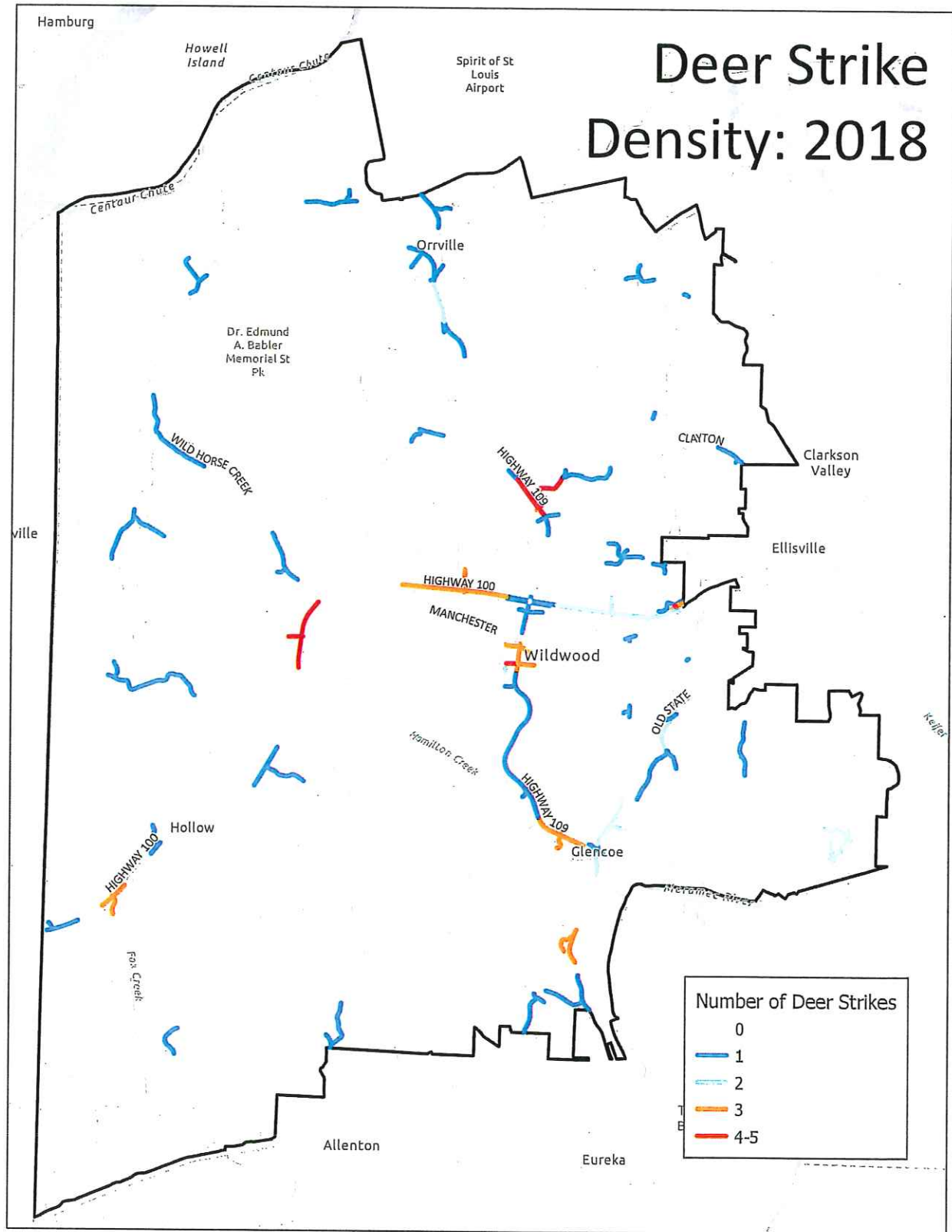


FIGURE 23

