

Dierbergs Town Center



Development

For More Information Contact:



Weller Meyer

314-492-5007

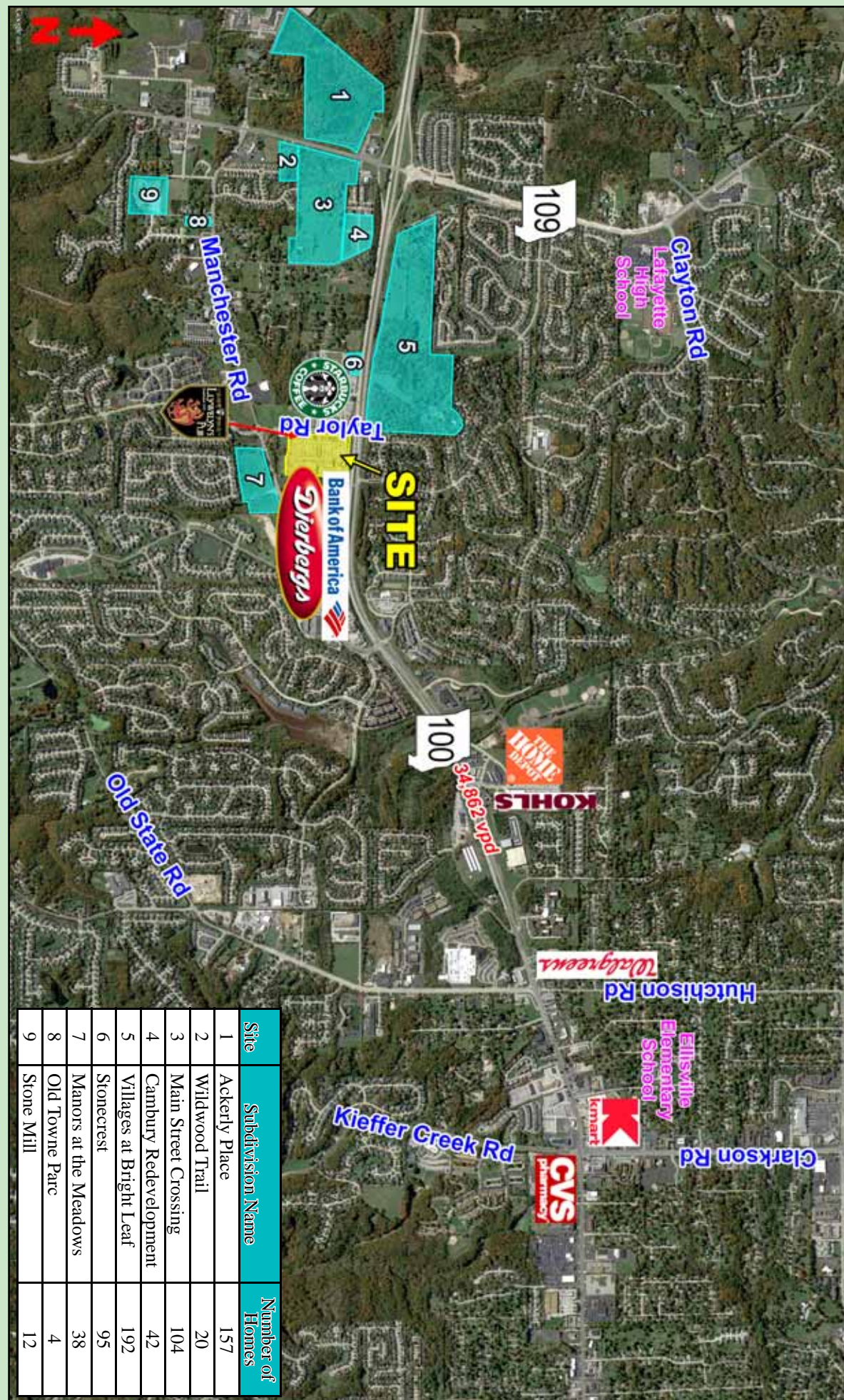
wmeyer@caplaco.com

11850 Studt Avenue

P.O. Box 419121

St. Louis, Missouri 63141

www.caplaco.com



11850 Studt Avenue
 P.O. Box 419121
 St. Louis, Missouri 63141
 Telephone: (314)991-8900
 Fax: (314)991-2474

The information contained herein was obtained from sources deemed reliable, however, Capitol Realty Group makes no guarantees as to the completeness or accuracy thereof. This information is subject to error, omission, change in price or conditions, prior sale or lease, or withdrawal without notice.

Demographics

	1-Mile	3-Mile	5-Mile
2021 Estimated Population	12,286	37,446	88,643
2021 Estimated Households	4,321	13,191	31,864
2021 Avg. Household Income	\$149,031	\$165,026	\$164,581



<i>Tenant</i>	<i>Size (sf)</i>
1 Massage Envy	2,266
2 Town Center Dental	3,200
3 Subway	1,600
4 Available	1,524
5 Pacific Beach	2,058
6 Land of Smile - Thai	1,200
7 Color Nail	1,200
8 Available	3,583
9 Ince Orthodontics	1,599
10 Mathnasium	1,600
11 Available	1,322
Dierbergs	73,947
12 West Oak Cleaners	1,093
13 Great Clips	981
14 Travel Tyme	981
15 Optimal Health Chiropractic	1,200
16 Main Street Creamery	1,600
17 Sunny Street Cafe	4,202
18 Botanica	6,547
19 Edward Jones	1,011
20 Anytime Fitness	5,536
21 Micro Meadows	1,590
22 Premier Martial Arts	1,600
23 Happy Go Lucky Outfitters	1,677
24 One Lucky Mutt	1,680
25 El Maguery	4,964
26 Clarkson Eyecare	2,172
27 St. Louis Bread Company	5,639
Bank of America	4,700

